

US 74 + NC 133

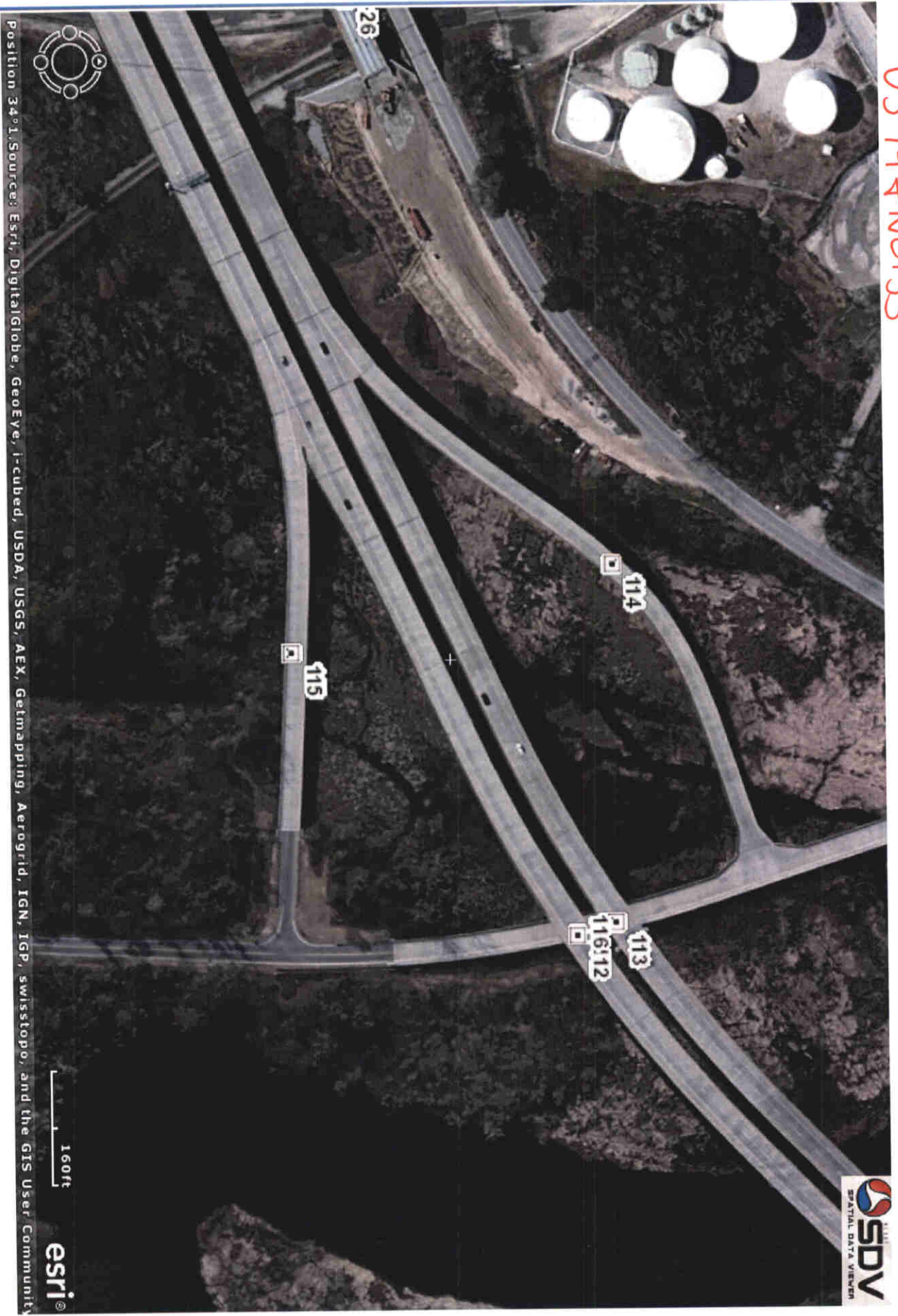


NC DOT GIS Unit

Position 34°15'03" N 77°56'54" W



US 74 + NC 133

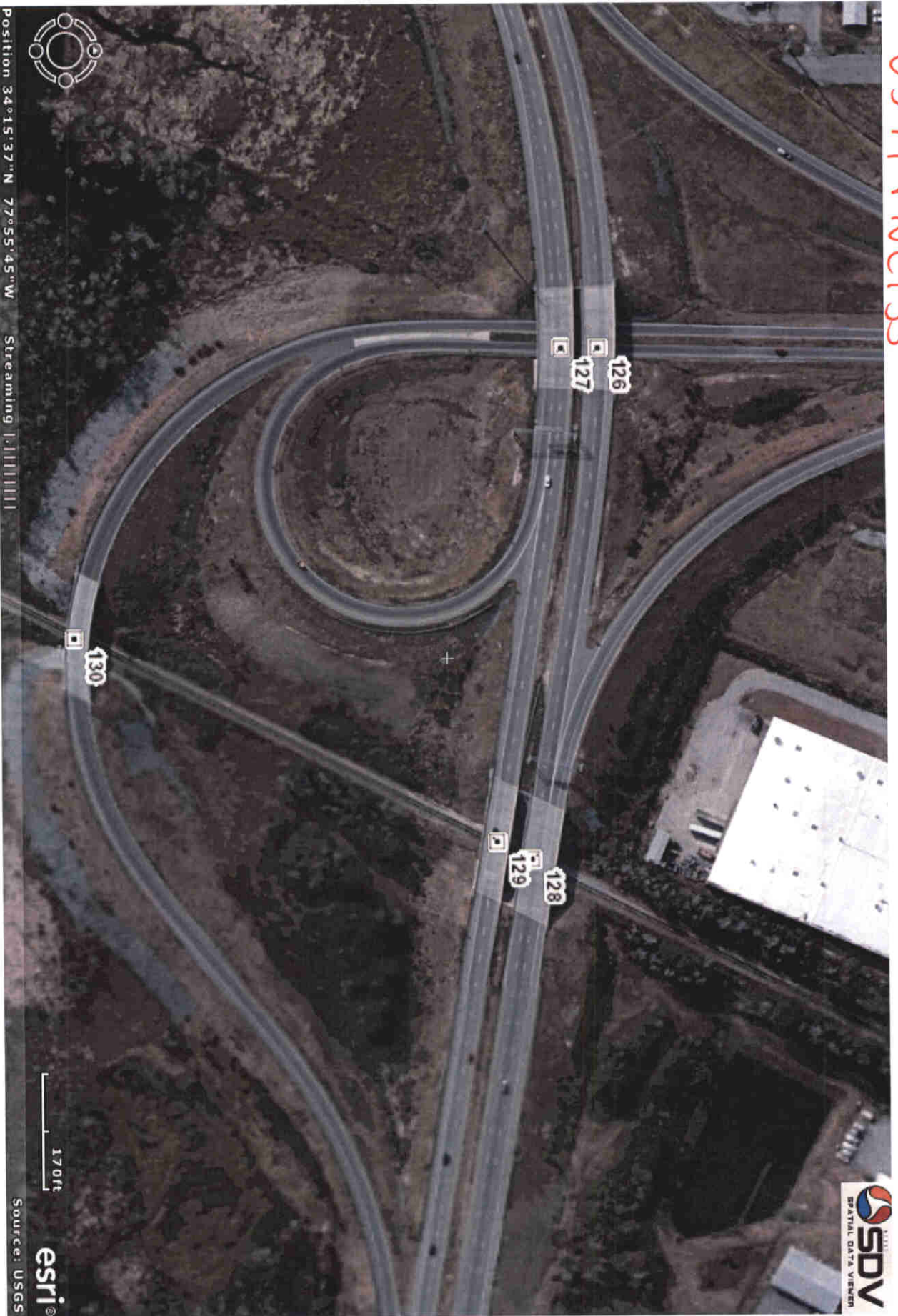


Position 34°1. Source: Esri, DigitalGlobe, GeoEye, i-cubed, USDA, USGS, AEX, Getmapping, Aerogrid, IGN, IGP, swisstopo, and the GIS User Community

1600ft



US 74 + N C 133



Position 34°15'37"N 77°55'45"W Streaming |



170ft

esri

Source: USGS



US 74



SDV Default Map

215ft

Position 34°15'32"N 77°55'17"W



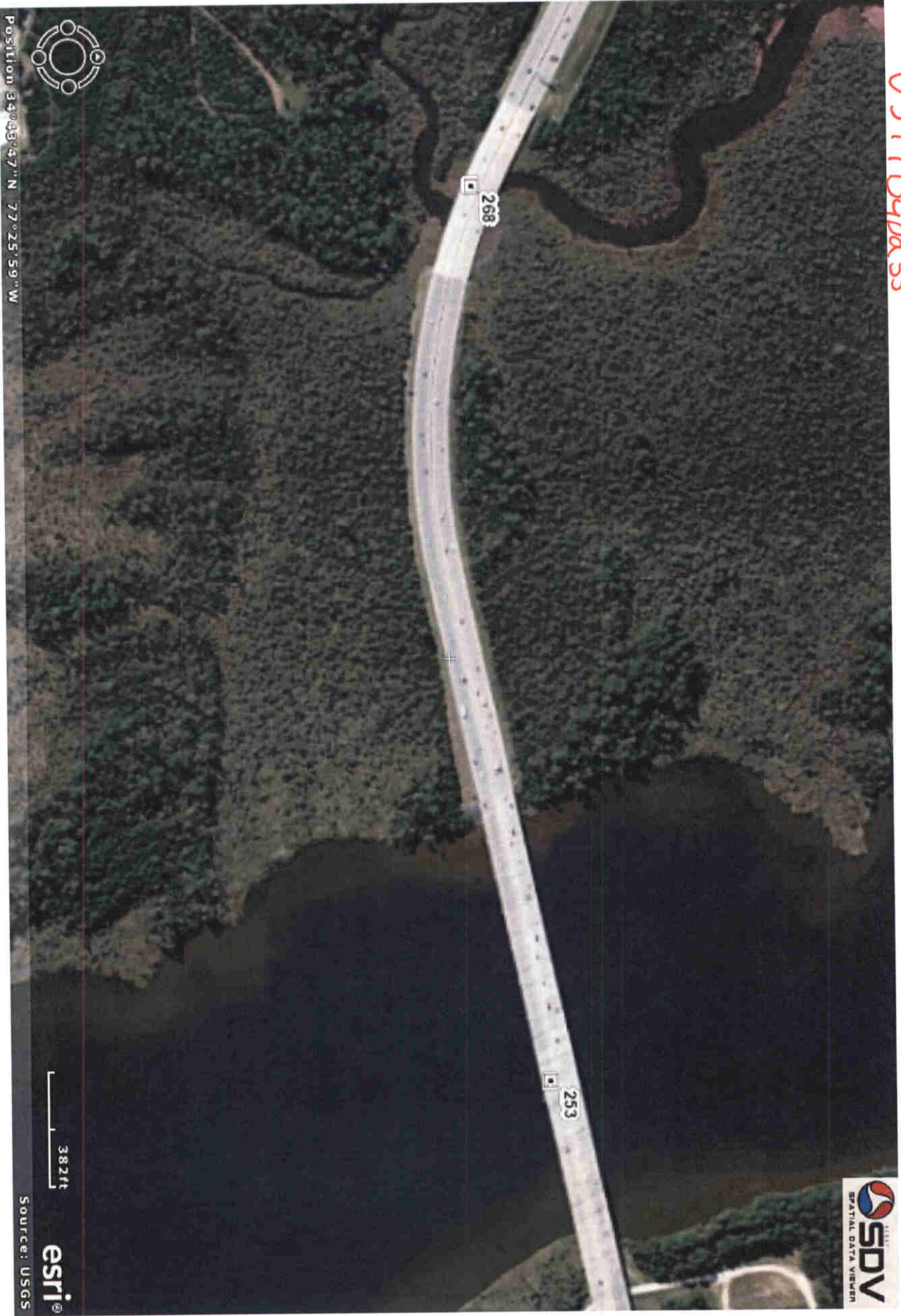
US17 Business + US17 Bypass + NC24/NC53



Position 34°4'. Source: Esri, DigitalGlobe, GeoEye, i-cubed, USDA, USGS, AEX, Getmapping, Aerogrid, IGN, IGP, swisstopo, and the GIS User Community



US 17 Bypass



Position 34°48'47"N 77°25'59"W



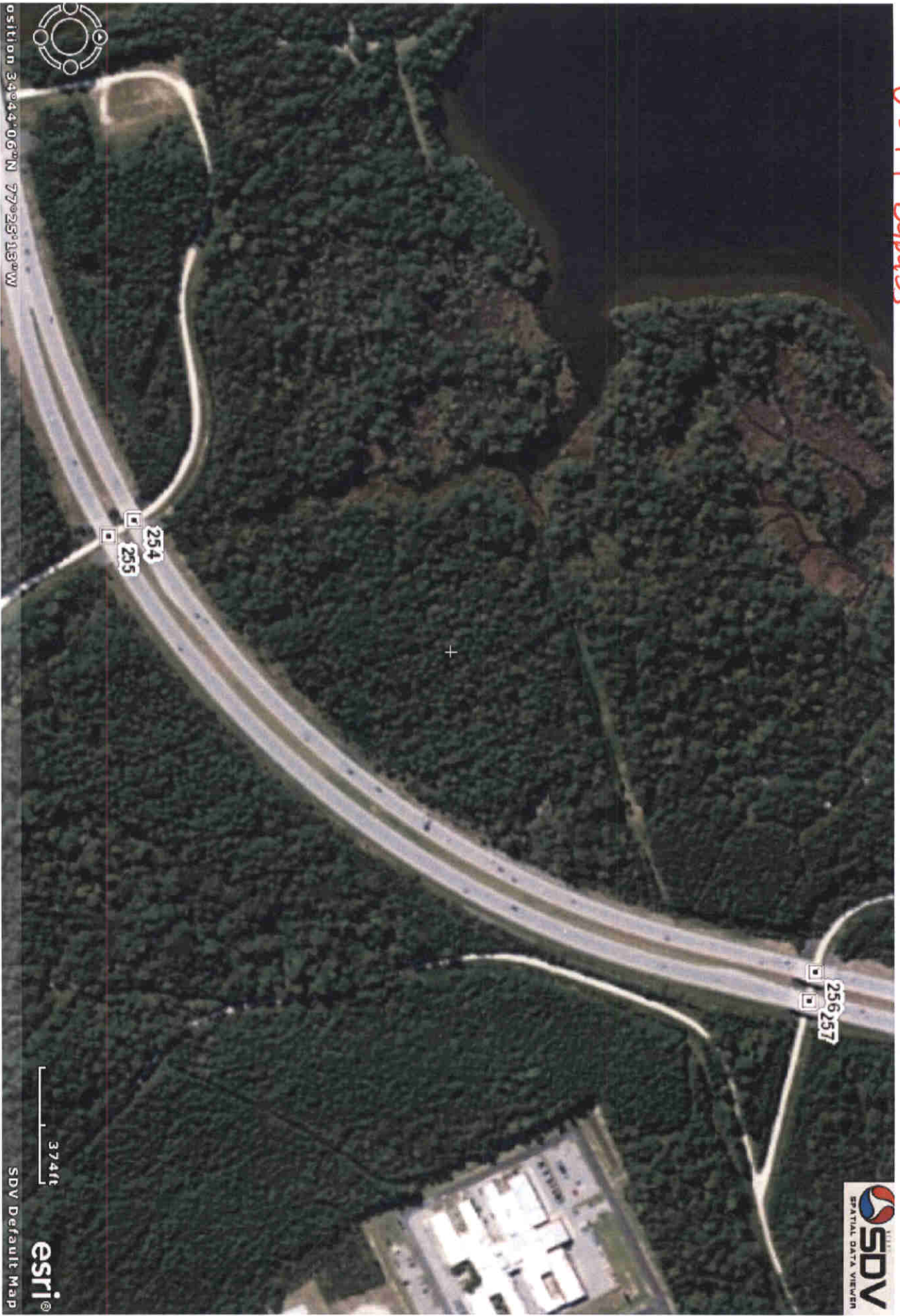
382ft

Source: USGS

esri

SDV
SPATIAL DATA VIEWER

US 17 Bypass



Position 34°44'06" N 77°25'13" W



374ft

SDV Default Map

esri®



US 17 Bypass



Position 34°44'48"N 77°24'35"W

210ft

NCDOT GIS Unit
esri

SDV
SPATIAL DATA VIEWER

US 17 Bypass



Position 34°45'16" N 77°23'46" W



120ft

SDV Default Map

esri

SDV
SPATIAL DATA VIEWER

US 17 Bypass



Position 34°45'53"N 77°23'51"W

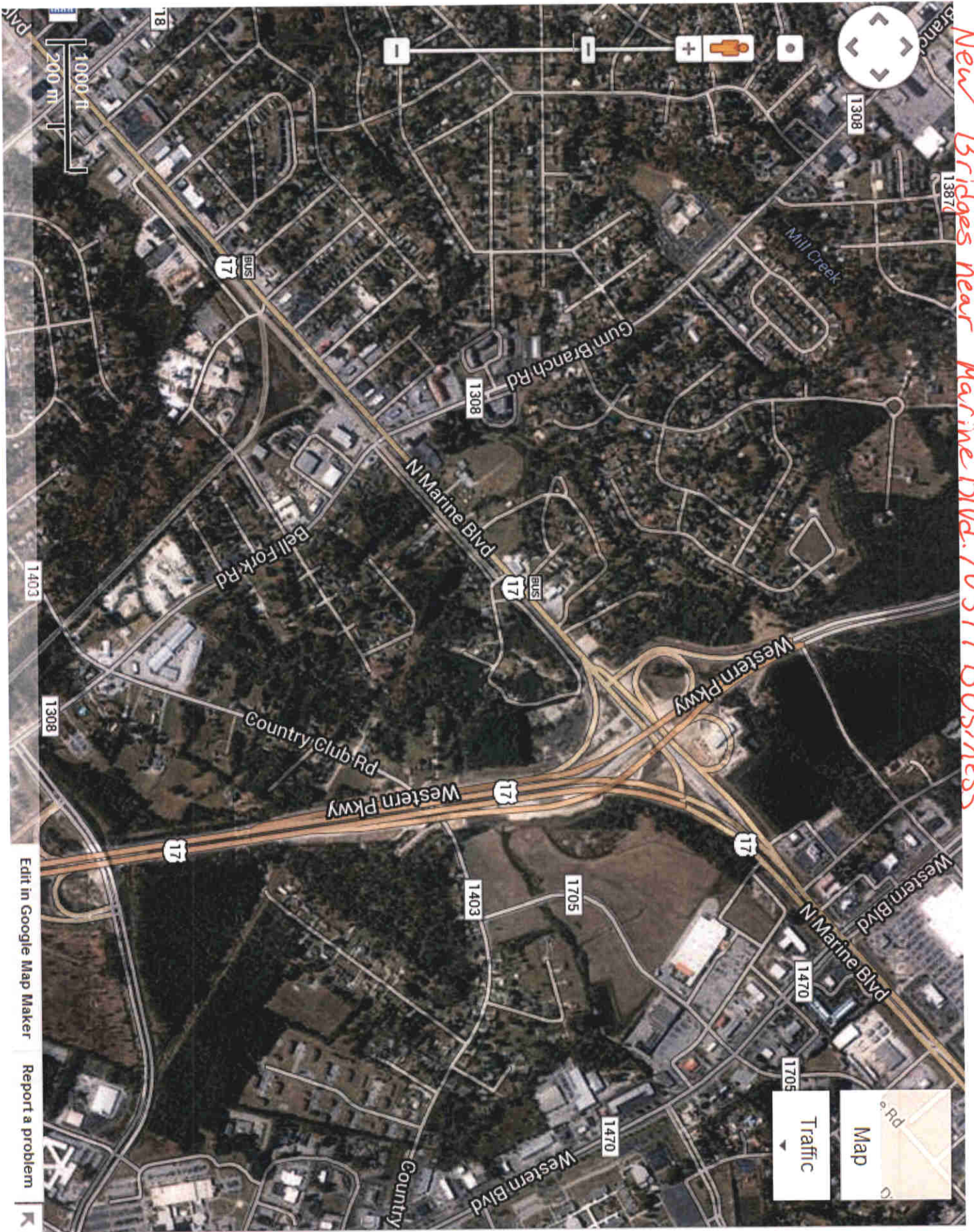


471ft

SDV Default Map



New Bridges near Marine Blvd. / US 17 Business



SUMMARY OF QUANTITIES

Primary polyurea pavement marking 2014

Brunswick				
Route	BRIDGE #	4 " Lin Feet White	4 " Lin Feet Yellow	8 " Lin Feet Yellow (Hash Marks)
NC 130	71	3,670	3,670	
TOTAL		3,670	3,670	
New Hanover				
Route	BRIDGE #	4" Lin Feet White	4 " Lin Feet Yellow	8 " Lin Feet Yellow (Hash Marks)
US 74/MLK	107	550	220	
US 74/MLK	108	720	272	150
US 74/MLK	109	1,872	1,220	
US 74/MLK	110	1,770	885	
US 74/MLK	111	1,672	1,120	
US 74/MLK	112	5,425	3,100	
US 74/MLK	113	6,200	3,100	
US 74/MLK	114	980	980	
US 74/MLK	115	620	620	
US 74/MLK	116	900	2,700	
US 74/MLK	126	189	151	
US 74/MLK	127	227	151	
US 74/MLK	128	405	180	
US 74/MLK	129	225	180	
US 74/MLK	130	180	180	
US 74/MLK	131	3,288	2,192	
US 74/MLK	132	3,338	2,192	
US 74/MLK	133	720	480	
US74/MLK	134	760	500	
TOTAL		30,041	20,423	150
Onslow				
Route	BRIDGE #	4 " Lin Feet White	4 " Lin Feet Yellow	8 " Lin Feet Yellow (Hash Marks)
US 17 Bypass	253	11,184	7,456	
US 17 Bypass	254	250	125	
US 17 Bypass	255	250	125	
US 17 Bypass	256	250	125	
US 17 Bypass	257	250	125	
NC 24	259	353	282	
US 17 Bypass	260	338	225	
NC 24/NC 53	262	401	267	
NC 24/NC 53	263	420	276	
US 17 Business	265	338	270	
US 17 Bypass	266	435	290	
US 17 Bypass	268	3,615	2,410	
US 17 Bypass	275	375	250	
US 17 Bypass	276	375	250	
US 17 Bypass	277	279	186	
US 17 Bypass	278	285	190	
US 17 Bypass	new bridge near Marine Blvd.	345	230	
US 17 Bypass	new bridge near Marine Blvd.	300	200	
US 17 Bypass	new bridge near Marine Blvd.	278	185	
US 17 Bypass	new bridge near Marine Blvd.	328	215	
US 17 Bypass	new bridge near Marine Blvd.	560	373	
US 17 Bypass	new bridge near Marine Blvd.	402	268	
US 17 Bypass	new bridge near Marine Blvd.	413	275	
TOTAL		22,024	14,598	
		Linear Feet	Linear Feet	Linear Feet
	Total Quantity	55,735	38,691	150
	Total Combined Quantity	94,576		